

Medical Equipment Training Course Spotlight

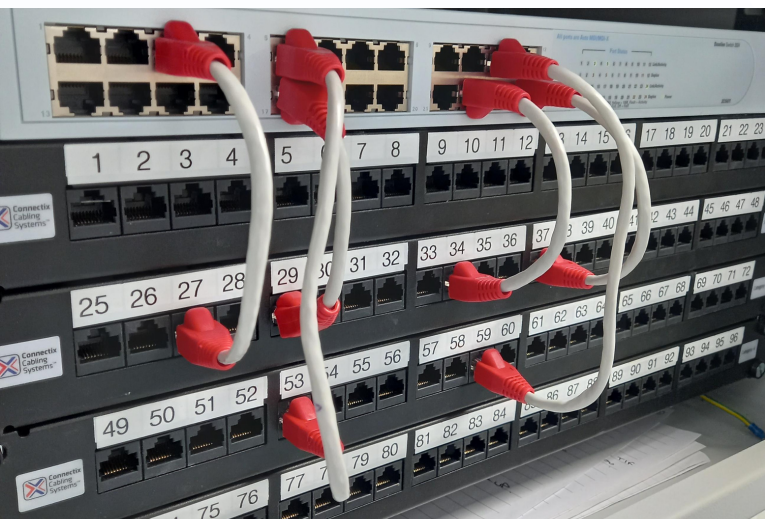


MENC | Medical Equipment & Cybersecurity Course

The MENC course is a new addition to the medical equipment portfolio here at Eastwood Park Training, where it has transformed the approach in the teaching of fundamental principles and standards for clinical/medical engineers to be able to tackle the issues surrounding medical device connectivity.



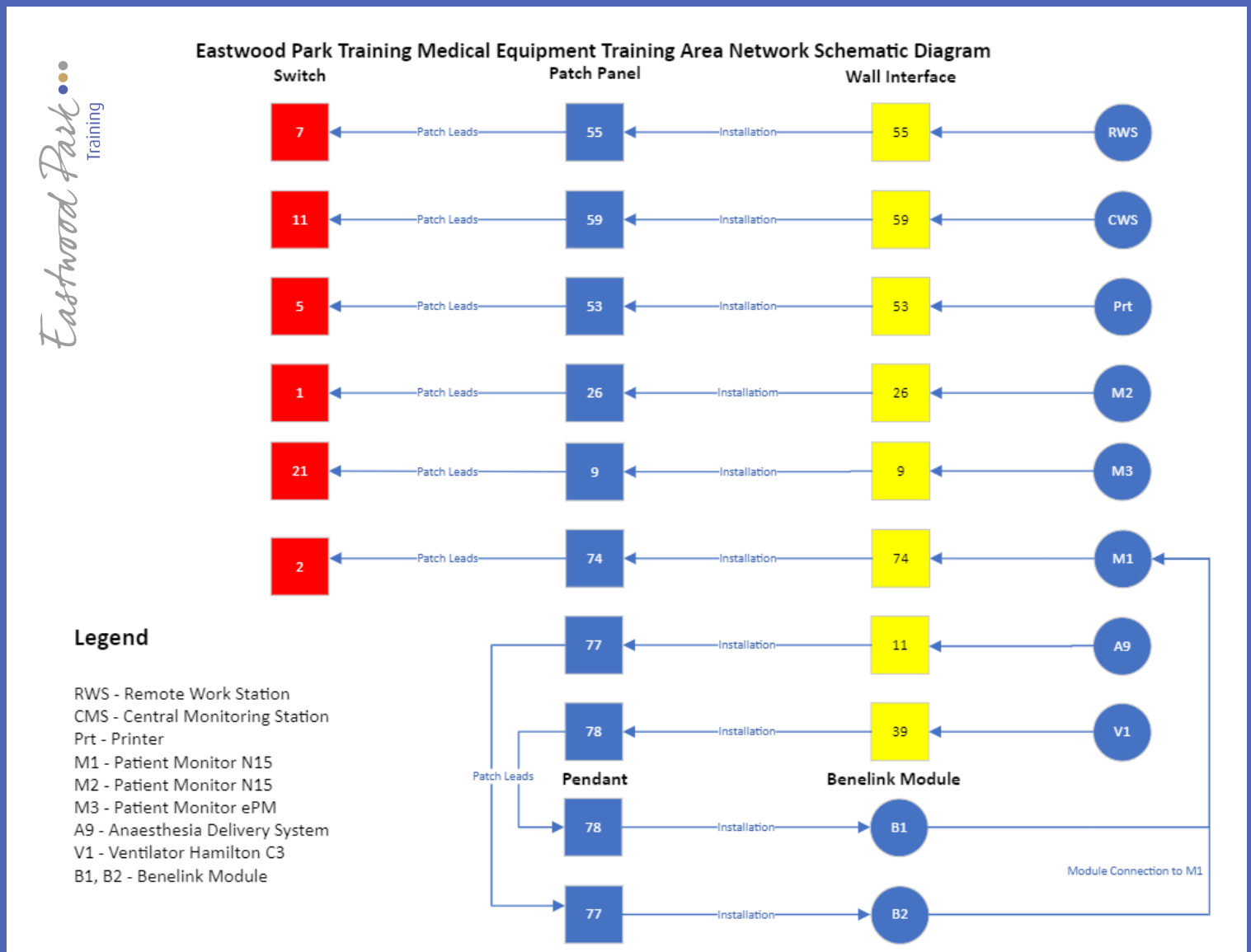
Our training facility has an independent hardwired ethernet that spans several locations within our new training facility - namely the Operating Theatre, The Ward, and the Pre-Op preparation room where we have the capability for our learners to be able to connect modern medical devices and fault find on a live network.



Eastwood Park...
Training

The Operating Theatre and switch at Eastwood Park Training

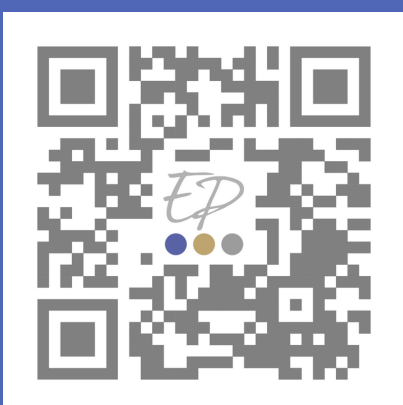
Eastwood Park Training Medical Equipment Training Area Network Schematic Diagram:



To support the practical elements of building a network, cable repair and Bluetooth connectivity, the course offers the opportunity to study theoretical principles, current standards, (HL7, HL7 UK/DICOM and OSI Framework), data buses, (RS232), SaMD/SiMD, and the fundamental principles and application of network/cyber security with reference to current NHS guidance.

This course is ideal for medical/clinical engineers who are involved or have a responsibility with the connectivity of medical devices and liaising with IT professionals.

The course is City & Guilds Assured with an issued digital Certificate on successful completion of this course which may be utilised in providing evidence of continued professional development and support the achievement of competency within the overall equipment support to medical devices subject area



Find out everything you need to know about our medical equipment and networking course, and book your place online here:

Eastwood Park...
Training