



Medical Gases

Eastwood Park delivers **medical gas** courses to support a number of roles, through a mix of theory and practical training. Learners can take advantage of a rare opportunity to train on a medical gas pipeline system outside of a hospital in Eastwood Park's brand new, state-of-the-art training centre.

Courses

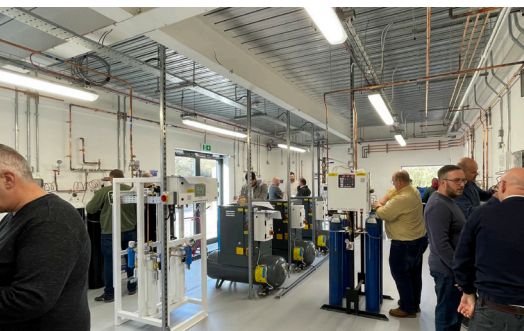
- H** Competent person MGPS
- H** Competent person MGPS refresher (maintenance & installation)
- H** Competent person MGPS refresher (maintenance)
- H** Authorised person MGPS, refresher & intensive
- H** Quality controller MGPS introduction
- H** Medical gas hose making
- H** Nurse MGPS
- H** Porter MGPS
- H** Medical gas pipeline systems calculations
- H** Medical gas alarms maintenance & management
- H** MGPS Advanced Practical

Working to key guidance

Eastwood Park's medical gas training works to guidance set out in HTM 02: Medical gas pipeline systems. The HTM brings together all the relevant ACOP's and other related guidance e.g. BCGA (British compressed gas association) into one document.

Unique engineering degrees

Our established degree programme presents a unique opportunity to gain a work-based qualification specific to healthcare, with an option to progress to a BSc (Hons) management degree.



50+ years of world-class training

(H) = Healthcare

(C) = Commercial



Fire Safety

Eastwood Park delivers **fire safety** courses ranging from fire risk assessment & fire code for healthcare premises to specialist guidance for hospital fire safety managers.

Courses

- (H) Fire safety managers (HTM 05-01)
- (H) Fire code for healthcare premises (HTM 05-02 & 05-03)
- (H) Fire risk assessment for healthcare premises (HTM 05-02)
- (H) Fire safety in healthcare - introduction to the basic principles (HTM 05-01)

Working to key guidance

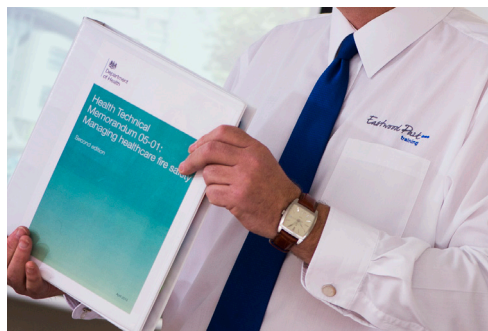
Eastwood Park's fire safety training works to guidance set out in HTM 05-01: Managing healthcare fire safety, HTM 05-02: Fire safety in the design of healthcare premises and HTM 05-03: Fire safety measures for health sector buildings.

Unique engineering degrees

Our established degree programme presents a unique opportunity to gain a work-based qualification specific to healthcare and with an option to progress to a BSc (Hons) management degree.

Need something different?

Scheduled, bespoke and onsite training available, contact us for your tailor-made quote.



50+ years of world-class training

H = Healthcare

C = Commercial



Water Hygiene

Eastwood Park's water hygiene portfolio includes courses for both healthcare and non-healthcare organisations, covering the most relevant and up-to-date guidance and helping you to understand the wider challenges of water safety.

Courses (for a full list, please see our website)

- H** Responsible | authorised person practical water safety for healthcare person & refresher
- H** Water safety for healthcare technicians
- H** Water safety & hygiene for water safety group
- H** Water safety in capital projects
- C** Legionella responsible person & refresher
- C** Legionella awareness for technicians

Working to key guidance

Eastwood Park's water hygiene training works to HTM 04-01: Safe water in healthcare premises, the Approved Codes of Practice (ACoPs) and other relevant guidance.

Unique engineering degrees

Our established degree programme presents a unique opportunity to gain a work-based qualification specific to healthcare and with an option to progress to a BSc (Hons) management degree.

Need something different?

Scheduled, bespoke and onsite training available, contact us for your tailor-made quote.



50+ years of world-class training

H = Healthcare

C = Commercial



Electrical LV

Eastwood Park delivers **low voltage** electrical training tailored to the intense demands of a healthcare environment. Training covers the Competent and Authorised Persons roles and specific courses on safety testing, electrical installations and the new 18th edition electrical guidance published this summer.

Courses

- H** Competent person LV (HTM 06-02)
- H** Authorised person LV & refresher
- H****C** Mechanical to Electrical conversion
- H****C** Practical fault-finding
- H****C** Minor works compliance
- H****C** Safe switchroom and substation entry

Working to key guidance

Eastwood Park courses refer delegates to applicable guidance including HTM 06-02, BS7671 Section 710 and IEC 60601 & 62353 in order to meet compliance with electrical related legal regulations.

Unique engineering degrees

Our established degree programme presents a unique opportunity to gain a work-based qualification specific to healthcare, with an option to progress to a BSc (Hons) management degree.

Need something different?

Scheduled, bespoke and onsite training available, contact us for your tailor-made quote.



50+ years of world-class training

(H) = Healthcare

(C) = Commercial



Mechanical

Eastwood Park recently expanded its **mechanical** portfolio and alongside courses for Skilled and Authorised persons, delivering BOAS & BOAS renewal training in partnership with Cochran UK.

Courses

- (H)(C) Skilled person pressure systems (JSP 375)
- (H)(C) Authorised person pressure systems (JSP 375)
- (H)(C) Pressure systems - hazards & responsibilities
- (H)(C) BOAS (Boiler operation accreditation scheme) & BOAS re-accreditation

Working to key guidance

Eastwood Park's mechanical training refers to relevant guidance including Pressure Systems Safety Regulations 2000 (PSSR) and JSP 375.

Cochran UK

Eastwood Park has partnered with Cochran UK to assist in the delivery of accredited operator and management training (BOAS).

Unique engineering degrees

Our degree programme presents a unique opportunity to gain a work-based qualification specific to healthcare, with an option to progress to a BSc (Hons) management degree.

Need something different?

Scheduled, bespoke and onsite training available, contact us for your tailor-made quote.



50+ years of world-class training

(H) = Healthcare

(C) = Commercial



Lifts

Eastwood Park delivers lift training for the healthcare & commercial sectors in our specialist facility with access to our 3-storey lift maintenance tower for practical, fault-finding exercises without the worry of time pressure or disruption to business.

Courses

- (H)(C) Competent person lift maintenance (HTM 08-02 & LOLER & SAFed)
- (H) Authorised person lift management (HTM 08-02 & LOLER & SAFed) & refresher
- (H)(C) Release of trapped passengers (HTM 08-02 & LOLER & SAFed)
- (C) Safe working on lifts & release of trapped passengers (BS7255, LOLER & SAFed)
- (C) Lift management duty holder (BS7255, LOLER & SAFed)
- (H)(C) Lift inspection

Working to key guidance

Working to HTM 08-02: Design and maintenance of lifts in the health sector, guidance and compliance with relevant legal requirements (including LOLER, PUWER & RIDDOR), SAFed Safety Guidance, British/European standards and Public Authority standards.

Need something different?

Scheduled, bespoke and onsite training available, contact us for your tailor-made quote.



50+ years of world-class training

(H) = Healthcare

(C) = Commercial



Heating & Ventilation

Eastwood Park delivers heating & ventilation training, delivering the knowledge and skills to meet the procedural and verification requirements for healthcare ventilation systems.

Courses

- (H) Competent person HVAC & refresher
- (H) Authorised person HVAC & refresher
- (H) Ventilation systems verification

Working to key guidance

Eastwood Park's ventilation training helps hospitals to maintain and test ventilation systems and air-flow regimes to ensure compliance with HTM 03-01 (this includes systems designed under HTM 2025).

Unique engineering degrees

Our established degree programme presents a unique opportunity to gain a work-based qualification specific to healthcare and with an option to progress to a BSc (Hons) management degree.

Unique facilities

Our heating, ventilation and air-conditioning lab allows engineers to apply classroom learning in a safe environment away from their workplace.

Need something different?

Scheduled, bespoke and onsite training available, contact us for your tailor-made quote.



50+ years of world-class training

(H) = Healthcare

(C) = Commercial

Eastwood Park...
Training



Health & Safety

Eastwood Park delivers **health & safety** training for those dealing with asbestos regulation compliance, COSHH compliance and managers needing an overview of H&S in the workplace.

Courses

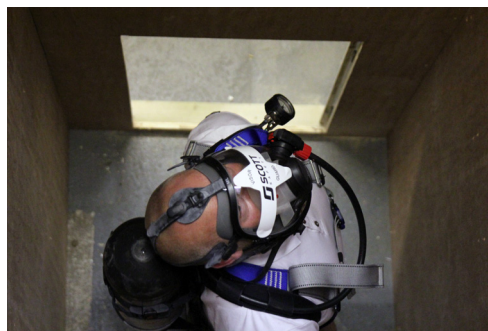
- (H)(C) IOSH managing safely
- (H)(C) IOSH working safely
- (H) Responsible person - practical asbestos compliance in healthcare
- (H) Responsible person - practical COSHH compliance in healthcare
- (H)(C) Authorised Person confined spaces (JSP 375) & refresher

Working to key guidance

Eastwood Park's courses strive to work to industry best practice and guidance.

Need something different?

Scheduled, bespoke and onsite training available, contact us for your tailor-made quote.



50+ years of world-class training



www.eastwoodparktraining.co.uk
+44 (0)1454 262777 | training@eastwoodpark.co.uk
Eastwood Park, Falfield, Gloucestershire, GL12 8DA

(H) = Healthcare

(C) = Commercial



Estates & Facilities Management

Eastwood Park delivers **estates & facilities management** training for those working both in-house or in outsourced healthcare estates teams, alongside specific short courses on managing capital projects, managing PFI contracts, utilising PAM and energy & sustainability. We have also developed a **new course** - Safe management of healthcare waste (HTM 07-01).

Courses

- (H) Essentials for estates
- (H) Essentials for authorising engineers
- (H) Essential HTM overview
- (H) Safe management of healthcare waste
- (H) Managing capital projects
- (H) PFI contract fundamentals
- (H) Premises assurance model (PAM) & CQC
- (H) Energy management & sustainability principles

Working to key guidance

Training works to guidance set out in the Health Technical Memoranda (HTMs), giving advice and guidance on the design, installation and operation of specialised building & engineering technology used in the delivery of healthcare.

Unique engineering degrees

Our established degree programme presents a unique opportunity to gain a work-based qualification specific to healthcare, with an option to progress to a BSc (Hons) management degree.

Need something different?

Scheduled, bespoke and onsite training available, contact us for your tailor-made quote.



50+ years of world-class training

(H) = Healthcare

(C) = Commercial



Decontamination

Eastwood Park delivers **decontamination** training that reflects the latest NHS and BS EN guidance, catering for delegates working to all the regional variations within the UK.

Courses (all to NHS guidance)

- (H) Large porous load sterilisers
annual | quarterly | weekly testing
- (H) Transportable vacuum steam sterilizers
periodic testing
- (H) Automated endoscope reprocessors
periodic | weekly testing
- (H) Endoscope washer disinfectors
weekly testing
- (H) Introduction to decontamination operations
- (H) SSD supervisors - managers
- (H) Decontamination lead - role & responsibilities
- (H) Authorised person - role & responsibilities
- (H) Authorising engineer (decon) competency framework

Apprenticeships

We offer unique, work-based qualifications in sterile services and clinical engineering, delivered in partnership with Dynamic Training.

Unique engineering degrees

Our established degree programme presents a unique opportunity to gain a work-based qualification specific to healthcare, with an option to progress to a BSc (Hons) management degree.

Need something different?

Scheduled, bespoke and onsite training available, contact us for your tailor-made quote.



50+ years of world-class training

H = Healthcare

C = Commercial

M = M.O.D



Electrical HV

Eastwood Park delivers **high voltage** electrical training from its purpose-built HV training facility catering to the needs of healthcare, MOD and those working in the commercial sector.

Courses

- H** Authorised person HV HTM 06-03 & refresher
- C** Authorised person HV commercial & refresher
- H** Managers' awareness HV HTM 06-03
- M** Authorised person HV (JSP375) & refresher
- H****C** HV protection

Working to key guidance

Eastwood Park works to all the relevant guidance including HTM (Health Technical Memorandum), HSE legislation JSP375 and compliance with commercial safety rules and procedures.

Unique engineering degrees

Our established degree programme presents a unique opportunity to gain a work-based qualification specific to healthcare, the option to progress to a BSc (Hons) management degree.

Need something different?

Scheduled, bespoke and onsite training available, contact us for your tailor-made quote.



50+ years of world-class training